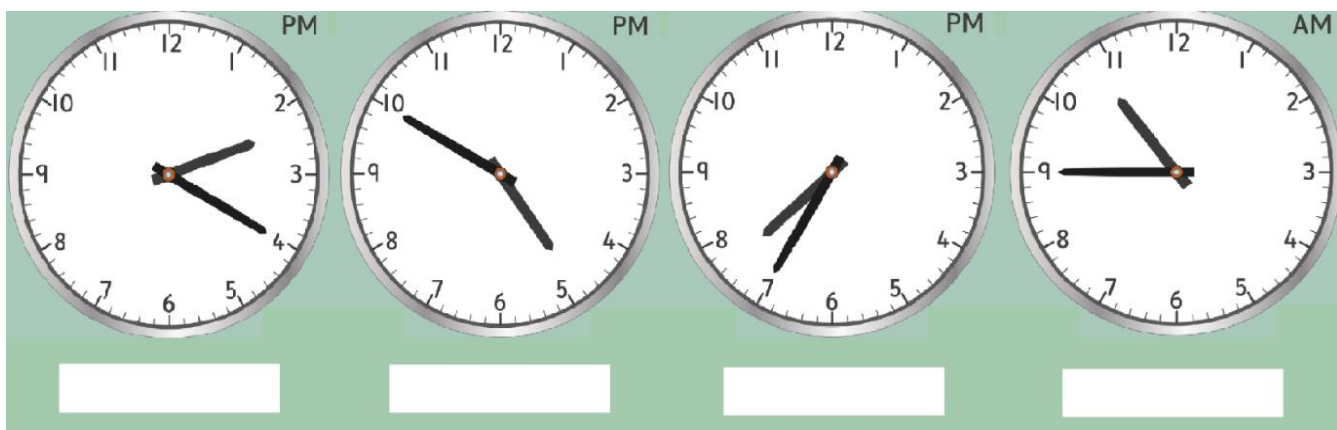
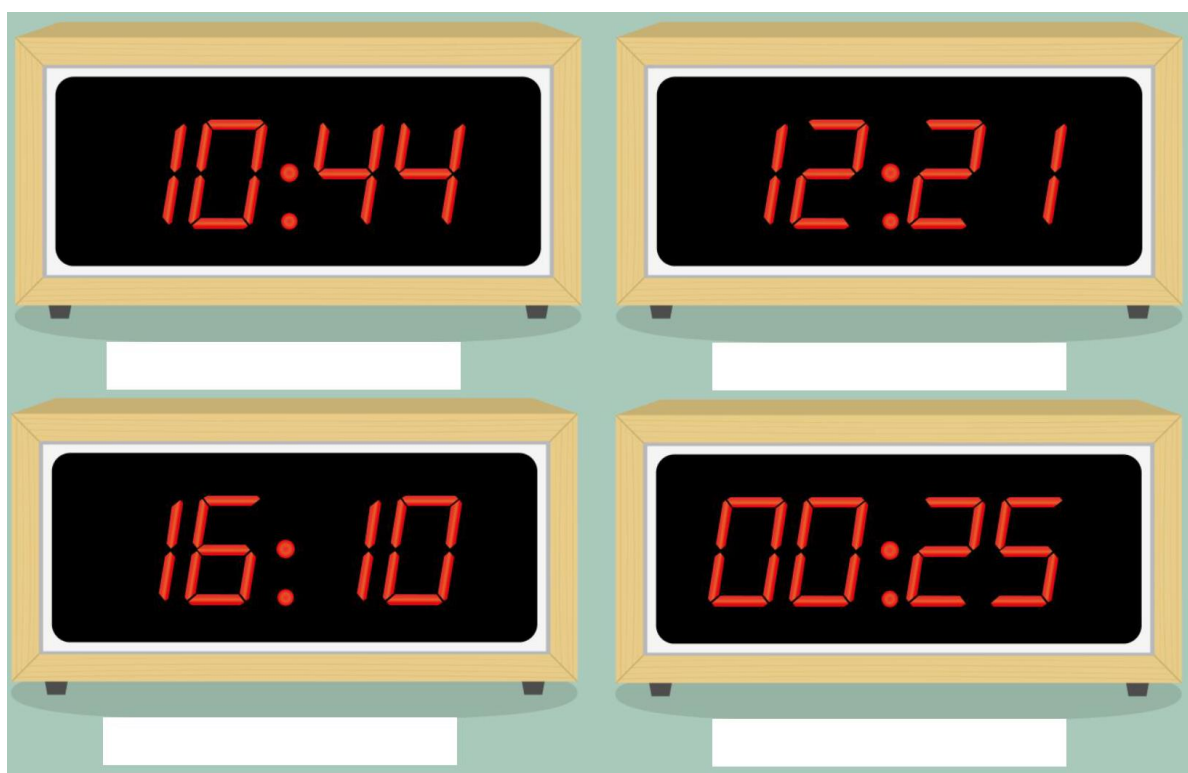


Entry 3: Read time from analogue and 24-hour digital clocks

1. Write underneath each clock face the time shown, in 24-hour format.



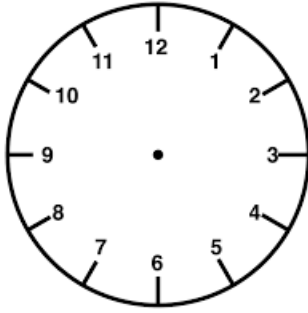
2. Write underneath each clock face the time shown, in 12-hour format.



3. Write 'quarter to eight' in another two ways, in words (not digits).

..... ,

4. Show 'twenty-five past 9' in the clock face below.



5. Zen also thinks that the clock face below shows the time '5 to 9'. Is he right? Why?



.....